

## Rabbit Anti-H3K9me3

<b>Catalogue no:</b>	700003	<b>Source:</b>	Rabbit
<b>Applications:</b>	ChIP, WB, Dot blot, ELISA	<b>Type:</b>	Monoclonal
<b>Concentration:</b>	1mg/ml	<b>Purification:</b>	Protein A (affinity purified)
<b>Size:</b>	100µl	<b>Storage:</b>	-20°C
<b>Specificity:</b>	Human, vertebrates. No cross reactivity with monomethylated Lysine 9 (K9me1), dimethylated Lysine 9 (K9me2), or other methylations in histone H3.		



## Background

Histone 3 tri methyl K9 (H3K9me3) is a histone mark associated with repressed chromatin. It condenses and compacts the chromatin, restricting the transcription machinery from binding and carrying out gene expression. It is a marker of constitutive heterochromatin, and generally associated with gene silencing. As a histone mark, it is widely found throughout human cell lines, serving as an abundant antibody target for ChIP.

## Immunogen

A trimethyl-peptide corresponding to Trimethyl-Histone H3 (Lys9).

## Buffer

50% Glycerol/PBS with 1% BSA and 0.09% sodium azide

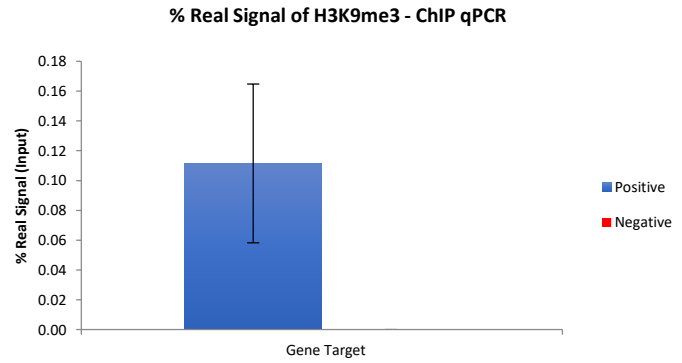
## Applications

Application	Suggested Dilution	Figure
Chromatin Immunoprecipitation	2µg: 1µg (antibody: chromatin)	1
Western blot	1:1000	2

\*This product is for research use only. Results may vary between antibody lots.

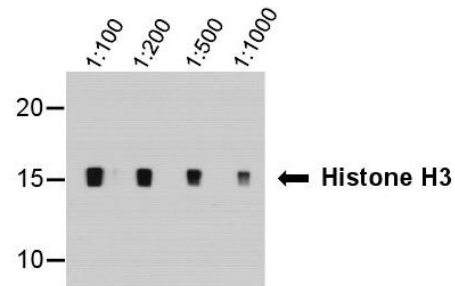
Chromatin immunoprecipitation (ChIP) assays were performed using the Chromatrap® standard ChIP spin column sonication kit for qPCR (Cat no. 500071) with 1ug of chromatin from Hec50 cells and 2ug of Anti-H3K9me3 antibody. qPCR was used to analyse the enrichment of H3K9me3 onto the positive gene locus.

**Figure 1. H3K9me3 ChIP qPCR**



HeLa histones were separated by 15% SDS-PAGE and blotted onto nitrocellulose membrane (Schleicher & Schüll). The membrane was blocked in 3% NFD in PBS-T for 1h at RT and incubated at 4°C overnight with ant H3K9me3 antibody at the indicated dilutions. A 30 second

**Figure 2. H3K9me3 Western Blot**



[www.chromatrap.com](http://www.chromatrap.com)

**Advancements in Epigenetics**

Chromatrap is a brand of Porvair Sciences Ltd. Ciywedog Rd South, Wrexham Industrial Estate, Wrexham LL13 9XS, United Kingdom  
 Email Sales: [sales@chromatrap.com](mailto:sales@chromatrap.com) Technical Support: [support@chromatrap.com](mailto:support@chromatrap.com)

Company registered in England no 2047818 Registered office: 7 Regis Place, Bergen Way, Kings Lynn, PE30 2JN, United Kingdom