

Chromatrap® HT Size Selection

For the efficient purification and size selection of DNA from enzymatic reactions and library preparations in a high throughput format

Protocol v1.0

Catalogue no. 500263



HT SIZE SELECTION



Contents

Introduction	3
Kit components and Storage	3
Additional materials required	3
Protocol: Using a centrifuge	4
Protocol: Using a vacuum	5
Appendix	6
Troubleshooting Guide and FAQs	7
Other products available from Chromatrap®	8

Introduction

The Chromatrap® HT Size Selection kit is designed for size selection of DNA fragments from a wide range of sources including PCR mixtures, ChIP samples, restriction enzyme digestions, ligations and NGS sequencing library reactions. Using proprietary filtration media, high quality DNA fragments of desired size can be effectively selected in under 5 minutes. Buffers are optimised to remove any unwanted impurities while providing efficient DNA recovery from samples at the selected size. DNA obtained using the Chromatrap® HT Size Selection kit is suitable for sensitive reactions such as ligation, PCR, and Next Generation Sequencing (ChIP seq, Medip seq, etc). DNA fragments ≥ 200 bp, ≥ 150 bp, ≥ 100 bp, ≥ 50 bp can be recovered efficiently and quickly using Chromatrap® HT Size Selection columns. The Chromatrap® HT Size Selection kit is ideal for removing unwanted DNA fragments such as primer dimers formed during NGS library preparation or free nucleotides from PCR reactions.

Kit Components and Storage

Kit component	Quantity	Storage temperature
Chromatrap® HT Size Selection plate	2	RT
96-well Collection Plate	2	RT
96-well Elution Plate	2	RT
SzS Binding Buffer	100 ml	RT
SzS Wash Buffer*	40 ml	RT
SzS Elution Buffer	10 ml	RT

The Chromatrap® HT Size Selection kit (Cat no. 500263) and its contents can be stored for up to 12 months after the date of receipt without showing a reduction in performance and quality.

Chromatrap® products are intended for research purposes only.

***Preparation of SzS Wash Buffer:** Add 160 ml ethanol (96-100%) to the SzS Wash Buffer concentrate and note on the label with the date.

WARNING: Some of the components of this product are irritants, refer to MSDS sheet for more information and follow the safety guidelines of your research facility.

Additional materials required

- Ethanol (96-100%)
- Nuclease free water
- 96-well reservoir plates such as Porvair Sciences product no: 219250
- Centrifuge with plate rotor
- Multichannel pipette

For vacuum protocol only

- Vacuum manifold
- Vacuum pump

Protocol

Using a centrifuge

1. Add up to 100 µl of sample DNA to a 1.5 ml microcentrifuge tube or a well of 96-well reservoir plate of at least 900 µl volume (such as product number 219250 Porvair Sciences). If the sample volume is lower than 100 µl make up to a final volume of 100 µl using nuclease-free water.
2. In a separate 1.5 ml microcentrifuge tube or well of 96-well reservoir plate of at least 900 µl volume (such as product number 219250 Porvair Sciences) place 500 µl of Chromatrap® SzS Binding Buffer and adjust the amount of 95% ethanol to select for the desired length of DNA fragments (see Table 1 below). Mix well by pipetting the entire volume up and down at least 5 times.

Table 1

DNA fragment size preserved	Volume of 95% Ethanol
≥200 bp	50 µl
≥150 bp	75 µl
≥100 bp	100 µl
≥ 50 bp	250 µl

For example, to remove fragments smaller than 150 bp, add 75 µl 95% ethanol to 500µl SzS Binding Buffer and mix well

3. Transfer each DNA sample from Step 1 to its corresponding Binding Buffer/ethanol mix from step 2. Mix well by pipetting.
4. Place the HT Size Selection plate on to a 96 well collection plate. Transfer the entire volume of each DNA/Binding Buffer/ethanol mixture from step 4 (650 µl-850 µl) to a well of the Chromatrap® HT Size Selection plate.
5. Centrifuge 4,000xg for 60 seconds at RT. Discard the flow through and place the Chromatrap® HT Size Selection plate back on to its collection plate.
6. Add 700 µl of SzS Wash Buffer to each well of the Chromatrap® HT Size Selection plate and centrifuge 4,000xg for 60 seconds at RT. Discard the flow through and place the Chromatrap® HT Size Selection plate back on to its collection plate.
7. Add 250 µl of SzS Wash Buffer to each well of the Chromatrap® HT Size Selection plate and centrifuge 4,000xg for 60 seconds at RT. Discard the flow through and place the Chromatrap® HT Size Selection plate back on to its collection plate.
8. Perform a dry spin, 4,000xg for 60 seconds at RT, to remove any residual liquid from the Chromatrap® HT Size Selection plate.
9. Transfer the Chromatrap® HT size selection plate to a clean supplied 96 well elution plate.
10. To elute the DNA, add 20-50 µl DNA Elution Buffer to the centre of the filter in each well and incubate for at least 1 minute at RT. Centrifuge at full speed for 60 seconds to collect the eluted DNA.

Protocol

Using a vacuum

1. Add up to 100 µl of sample DNA to a 1.5 ml microcentrifuge tube or a well of 96-well reservoir plate of at least 900 µl volume (such as product number 219250 Porvair Sciences). If the sample volume is lower than 100 µl make up to a final volume of 100 µl using nuclease-free water.
2. In a separate 1.5 ml microcentrifuge tube or well of 96-well reservoir plate of at least 900 µl volume (such as product number 219250 Porvair Sciences) place 500 µl of Chromatrap® SzS Binding Buffer and adjust the amount of 95% ethanol to select for the desired length of DNA fragments (see Table 1 below). Mix well by pipetting the entire volume up and down at least 5 times.

Table 1

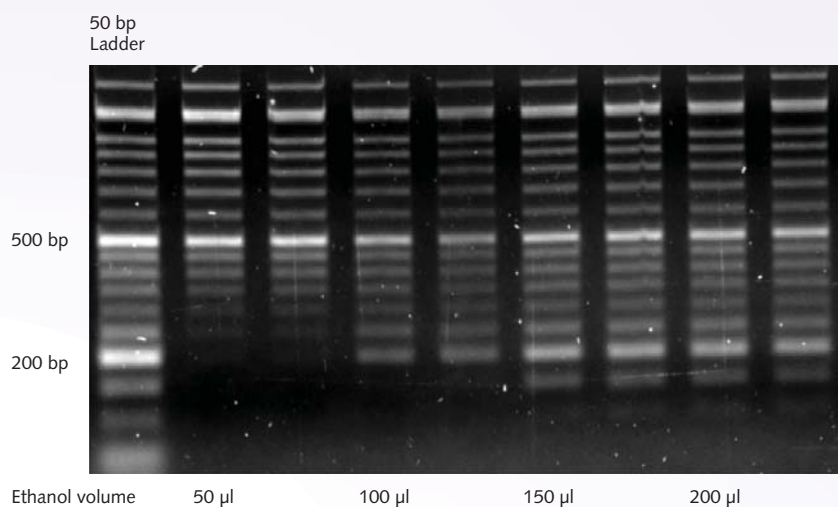
DNA fragment size preserved	Volume of 95% Ethanol
≥200 bp	50 µl
≥150 bp	75 µl
≥100 bp	100 µl
≥ 50 bp	250 µl

For example, to remove fragments smaller than 150 bp, add 75 µl 95% ethanol to 500µl SzS Binding Buffer and mix well

3. Transfer each DNA sample from Step 1 to its corresponding Binding Buffer/ethanol mix from step 2. Mix well by pipetting.
4. Place a Chromatrap® 96-well collection plate in the bottom of the vacuum manifold with enough spacers to ensure a seal is obtained when the Chromatrap® HT DNA Purification plate is positioned on top.
5. Transfer the entire volume of each DNA/Binding Buffer/ethanol mixture from step 4 (650 µl-850 µl) to a well of the Chromatrap® HT Size Selection plate.
6. Switch on the vacuum to pull the sample through the well (0.1-0.2 Bar).
7. Turn off the vacuum once all the sample has passed through to ensure equal vacuum is applied to all samples. Discard the flow through.
8. Add 700 µl SzS Wash Buffer to each well and switch on the vacuum to pull the sample through the well (0.1-0.2 Bar). Turn off the vacuum once all the sample has passed through and discard the flow through.
9. Add 250 µl SzS Wash Buffer to each well and switch on the vacuum to pull the sample through the well (0.1-0.2 Bar). Turn off the vacuum once all the sample has passed through and discard the flow through.
10. Switch on the vacuum for 5 minutes to ensure all liquid is removed from the membrane.
11. Place a clean 96-well elution plate in the bottom of the vacuum manifold with enough spacers to ensure a seal is obtained when the Chromatrap® HT Size Selection plate is placed on top.
12. To elute DNA, add 50 µl DNA Elution Buffer to the centre of the membrane of each well and incubate for 1 minute. Switch on the vacuum for 1 minute to elute the sample (0.2-0.4bar).

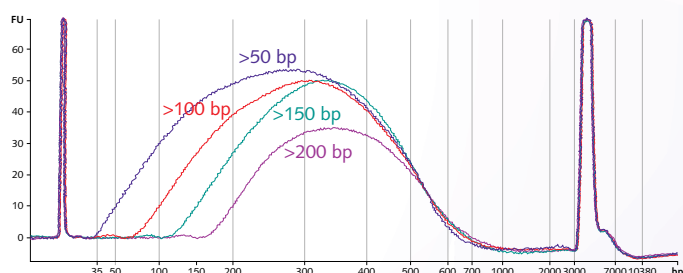
Appendix

Figure 1. Efficient purification of 50-200 bp fragments from a full range of DNA sizes.



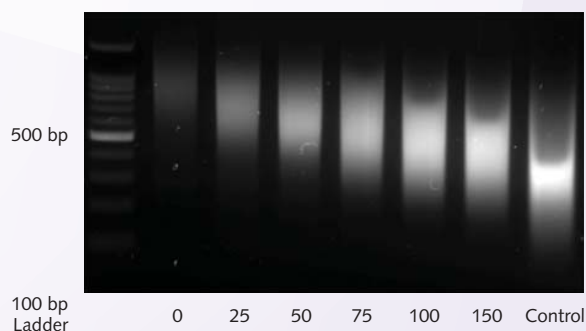
Chromatrap®'s HT Size Selection Kit was used to purify DNA excluding fragment sizes from 50-200 bp. Following purification, 10 µl from each 30 µl elution was loaded on a 2% agarose gel. 10 µl of DNA ladder (50-200 bp ladder) was used per sample. Highly efficient DNA recovery within the expected size range is clearly demonstrated.

Figure 2A. Efficient purification and size selection of 50-200 bp sheared salmon sperm DNA analysed by Bioanalyser.



A - Bioanalyser traces of the salmon sperm size selection and purification. A - 1 in 40 dilution was made of each purified sample in nuclease free water and 1 µl of the dilution was analysed using a High Sensitivity DNA chip on an Agilent 2000 bioanalyser.

Figure 2B. Efficient purification and size selection of 50-200 bp sheared salmon sperm DNA.



B - Chromatrap®'s HT Size Selection kit was used to purify DNA excluding sizes from 50-200 bp. 10 µg of salmon sperm DNA fragmented by sonication (50- 1000 bp) was used per sample. Following purification, 10 µl from each 30 µl elution was loaded on 2% agarose gel.

Troubleshooting Guide and FAQs

1. I have very little DNA recovery following DNA purification, why?

Ensure that the ethanol used is always between 96 and 100%.

Ensure ethanol (96-100%) has been added to the DNA Wash Buffer.

Make sure that the lid to the wash buffer is fastened tightly after use to prevent ethanol evaporation.

Add SzS Wash Buffer directly to the centre of each well of Chromatrap® HT Size Selection plate to ensure the frit is completely covered for the best elution efficiency.

Input DNA may be low, check efficiency of reactions being carried out prior to clean up and size selection.

2. How do I choose my cutoff value?

To maximise the removal of undesired bands, always choose a cutoff at least 50bp above the size you want to remove.

Please check Table 1 for required volumes.

3. My purity ratio is low/below the limits which indicate the sample is not pure, why?

This may be due to residual ethanol from the wash buffer. An additional dry spin (full speed for 60 seconds at RT) should ensure the removal of any residual DNA Wash Buffer from your sample.

Make sure to perform both washes using the SzS Wash Buffer.

If necessary, eluted samples can be heated to 56°C for 10 minutes before loading into the gel to evaporate any residual ethanol.

4. My sample floats out of the well when trying to load a gel what can I do?

This indicates ethanol carryover. The SzS Wash Buffer may not have been completely removed during dry centrifugation step. Try an additional dry spin (full speed for 60 seconds at RT) to ensure the removal of any residual SzS Wash Buffer.

If necessary, eluted samples can be heated to 56°C for 10 minutes before loading into the gel to evaporate any residual ethanol.

5. Can I reduce the elution volume?

This kit has been optimised for an elution volume of 50 µl. However, this may be reduced to a minimum of 20 µl. For NGS library preparation the elution volume is 20 µl.

It is possible to elute in smaller volumes, however this may lead to a reduction in DNA yield.

6. Can I increase the recovery of my DNA eluted?

The yield of DNA may be improved by incubating the SzS Elution Buffer on the columns for 5 minutes before elution by heating the SzS Elution Buffer to 50°C.

7. Can I elute in water?

If required for downstream processing DNA can be eluted in nuclease free water with the same efficiency as the supplied SzS Elution Buffer.

Other products available from Chromatrap®

ChIP products

Product	Quantity	Catalogue no.
Chromatrap® ChIP-seq Pro A	24	500189
Chromatrap® ChIP-seq Pro G	24	500190
Chromatrap® HT ChIP-seq Pro A	1 x 96	500214
Chromatrap® HT ChIP-seq Pro G	1 x 96	500215
Chromatrap® Enzymatic ChIP-seq Pro A	24	500191
Chromatrap® Enzymatic ChIP-seq Pro G	24	500192
Chromatrap® HT Enzymatic ChIP-seq Pro A	1 x 96	500216
Chromatrap® HT Enzymatic ChIP-seq Pro G	1 x 96	500217
Chromatrap® ChIP qPCR Pro A	24	500071
Chromatrap® ChIP qPCR Pro G	24	500117
Chromatrap® Premium ChIP qPCR Pro A	24	500115
Chromatrap® Premium ChIP qPCR Pro G	24	500116
Chromatrap® HT ChIP qPCR Pro A	1 x 96	500161
Chromatrap® HT ChIP qPCR Pro G	1 x 96	500163
Chromatrap® HT Enzymatic ChIP qPCR Pro A	1 x 96	500162
Chromatrap® HT Enzymatic ChIP qPCR Pro G	1 x 96	500164
Chromatrap® Enzymatic ChIP qPCR Pro A	24	500166
Chromatrap® Enzymatic ChIP qPCR Pro G	24	500168
Chromatrap® Premium Enzymatic ChIP qPCR Pro A	24	500167
Chromatrap® Premium Enzymatic ChIP qPCR Pro G	24	500169
Chromatrap® FFPE ChIP-seq Pro A	24	500235
Chromatrap® FFPE ChIP-seq Pro G	24	500236
Chromatrap® Native ChIP-seq Pro A	24	500237
Chromatrap® Native ChIP-seq Pro G	24	500238
Chromatrap® Sonication Shearing		500239
Chromatrap® Enzymatic Shearing		500165

DNA products

Product	Quantity	Catalogue no.
Chromatrap® DNA Purification	50	500218
Chromatrap® Gel Purification	50	500219
Chromatrap® HT DNA Purification	2 x 96	500220
Chromatrap® HT DNA Purify and Concentrate	2 x 96	500240
Chromatrap® DNA Extraction	50	500260
Chromatrap® HT DNA Extraction	2 x 96	500261
Chromatrap® Size Selection	50	500262
Chromatrap® HT Size Selection	2 x 96	500263



Chromatrap

Worldwide Chromatrap® Technical Support Team

Tel: +44 (0) 7539 743216 support@chromatrap.com

Worldwide Sales and Customer Support Team

Tel: +44 (0) 1978 666222 sales@chromatrap.com

Clywedog Road South Wrexham Industrial Estate Wrexham LL13 9XS UK

www.chromatrap.com

Porvair and Chromatrap are registered trademarks of Porvair plc. BioVyon is a trademark of Porvair plc. Chromatrap® uses novel patented technology (UK Patent No. GB2482209, US Patent No. 9523681, Chinese Patent No. ZL 2011 8 0067254.X, Japan Patent No. JP 6088434, Australia Patent No. AU 2011340263). © Copyright 2017. Porvair Filtration Group Ltd. All rights reserved. Whilst every effort has been made to ensure the accuracy of this document, due to continuous product development, the data contained is subject to constant revision and Porvair Sciences Ltd. reserves the right to change, alter or modify its contents.