



Anti-Histone H4, Clone RM212

Catalogue no: 700021

Applications: ChIP, WB, ELISA, ICC, Multiplex

Concentration: 1mg/ml

Size: 100µl

Specificity: Human

Source: Rabbit

Type: Monoclonal

Purification: Protein A (affinity purified)

Storage: -20°C

Background:

Histone 4 (H4) is one of the core histone proteins, comprising the protein component of chromatin. H4 is involved in the structure of chromosomes and can be found bound to most gene sequences throughout the genome. It therefore serves as an abundant antibody target for ChIP.

Immunogen:

Recognises a peptide corresponding to the C-terminus of human Histone H4.

Buffer:

50% Glycerol/ PBS with 1% BSA and 0.09% sodium azide.

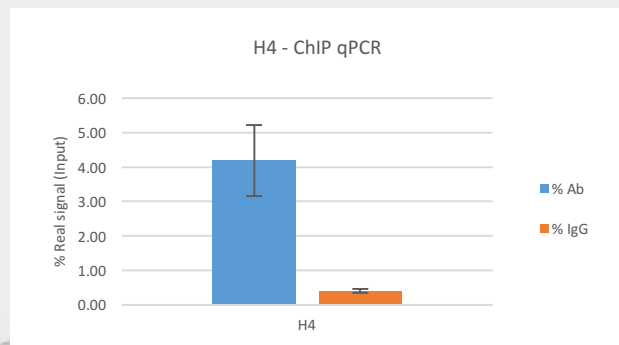
Applications:

Application	Suggested Dilution	Figure
Chromatin Immunoprecipitation	2µg: 1µg (antibody: chromatin)	1
Western Blot	0.01µg/mL – 0.25µg/mL	
ELISA	0.2µg/mL - 1µg/mL	
Immunocytochemistry	1µg/mL - 5µg/mL	
Multiplex	0.01µg/mL – 0.5µg/mL	

Please note: Optimal antibody dilutions should be determined by the user. These volumes are stated as guidelines only.

Fig 1. H4 ChIP qPCR

Chromatin immunoprecipitation (ChIP) assays were performed using the Chromatrap® standard ChIP spin column sonication kit for qPCR (Cat no. 500071) with 1µg of chromatin from Hec50 cells and 2µg of Anti-H4 antibody. qPCR was used to analyse the enrichment of the positive H4 antibody compared with the negative control rabbit IgG antibody.



Advancements in Epigenetics

*This product is for research use only. There is a possibility that results may vary between antibody lots.