



Positive Primer Set 9

Catalogue no: 800013



Chromatrap®'s Positive Primer Set 9 provides the necessary tools required for successful qPCR to validate your ChIP assay. It is a complete primer set including both forward and reverse primers, with sufficient primer mix supplied for a whole 96 well plate. Chromatrap®'s Positive Primer Set 9 is not suitable for use with non-human species.

Background:

Chromatrap®'s Positive Primer Set amplifies a 104 base pair fragment of the GREB1 (Growth regulation by estrogen in breast cancer 1) gene, found on human chromosome 2. GREB1 is an estrogen responsive gene that occurs in the estrogen-regulated pathway. It has roles in hormone responsive tissues and in cancer.

It is a positive gene target for the histone modification H4K12ac in the presence of estrogen.

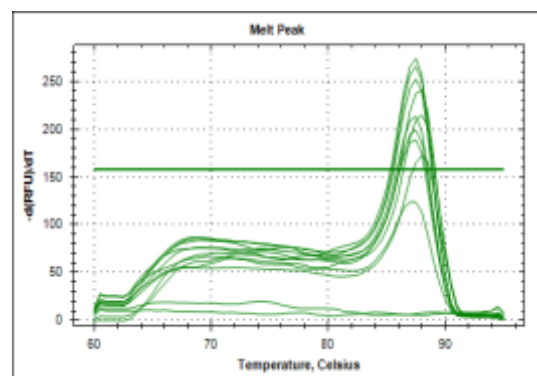
Suggested Usage:

Primer Set	Suggested Dilution	Figure
Positive Primer Set 9	Dilute from 4µM (provided) to 1µM working concentration	1

Please note: Optimal dilutions should be determined by the user. These volumes are stated as guidelines only.

Figure 1. Melt Curve of Positive Primer Set 9

Positive Primer Set 9 was run at a working concentration of 1µM. The melt curve confirms that only one PCR product is amplified with this primer set during qPCR.



Advancements in Epigenetics

*This product is for research use only. There is a possibility that results may vary between antibody lots.



www.chromatrap.com

Clywedog Rd South
Wrexham Industrial Estate
Wrexham LL13 9XS, United Kingdom

Tel: +44 (0) 1978 666239/40
Email: support@chromatrap.com

Advancements in Epigenetics

*This product is for research use only. There is a possibility that results may vary between antibody lots.

Company registered in England no 2047818 Registered office: 7 Regis Place, Bergen Way, Kings Lynn, PE30 2JN United Kingdom